

Our fundraising events to continue, and more to come!

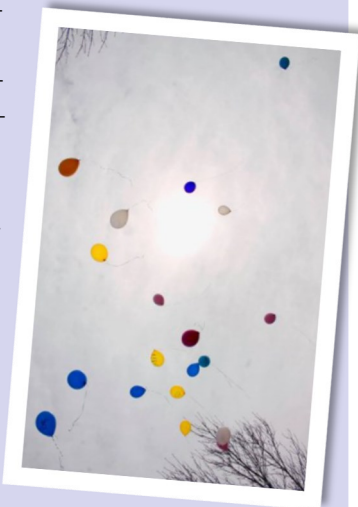
The Edward I. Moses Walk / Run for Life
Founded in 1979, The Edward I. Moses
Walk/Run for Life is a fundraising leader in the
local fight

against cancer, raising
over **\$2 MILLION to date!** Thanks to the
sponsorship of local
businesses and our
enthusiastic partici-
pants, this primary
fundraiser for the
SLCCF has provided
funding for pro-
grams that work to
educate the com-
munity and help
with the prevention, early de-
tection and diagnosis of cancer for local resi-
dents.



Krispy Kreme Donut Sales

This past year we had several volunteers sell-
ing Krispy Kreme Do-
nuts to raise money
for our charitable dis-
tributions. Keep look-
ing, you never know
when Krispy Kreme
will be sold your way.



Auction Time

We partnered with
Don Peck in 2021
for a
Facebook live auc-
tion out of Gouver-
neur NY. Accept-
ing your generous large ticket items for auc-
tion helped us raise over \$5,000 for the cause!

Show your support!

- Join us at one of our fundraising events!
Create a team and raise money!
- Visit our website and click the "donate"
button!
- **Memorial donations**—in memory of a
cherished loved one.
- **Donate while you shop!** AmazonSmile
will give 0.5% of the purchase price of
eligible products to the charitable or-
ganization of your choice... make yours
the **St. Lawrence County Cancer
Fund!** Just go to smile.amazon.com
instead of the regular page to shop
and pick your charity.
- Tell your neighbors
and friends about
us, encourage
them to support
our mission.

We are incredibly
grateful to those
who have supported
us in the past and are looking forward
to continuing our work toward this very
important cause. Please consider part-
nering with us in the local battle
against cancer by taking part in one of our
events or by hosting one of your own!

For more info:

Dick Christy – (315) 869-8962
Kellie Hitchman – (315) 244-1801

St. Lawrence County Cancer Fund

PO Box 291
Canton, NY 13617

www.walkrunforlife.com
www.facebook.com/walkrunforlife



St. Lawrence
County
Cancer
Fund



In 2011, the fundraising committee re-
sponsible for the popular **Edward I.
Moses Walk** reorganized to form the
St. Lawrence County Cancer Fund.

Our mission remains the same; we are,
and always will be, **dedicated to the
local fight against cancer.** We are
a group of volunteers that prides itself
on the fact that **ALL** proceeds remain in
St. Lawrence County to benefit our
friends and neighbors in the local fight
against cancer.



ST. LAWRENCE COUNTY CANCER FUND

HOME OF THE EDWARD I. MOSES WALK/RUN FOR LIFE

These are the programs supported by funds raised by the SLCCF and the services they provide to those in our community.

Ryan's Wish Foundation

Ryan's Wish assists those traveling to cancer treatment appointments. Recipients receive gifts of gas cards, money for hotel stays, vehicle maintenance help for those used in their travel, funds for medical co-pays and medications not covered by insurance. The foundation has given out \$157,934 since January 2019, helping 372 individuals and their families with cancer related expenses.

Hospice and Palliative Care of St. Lawrence Valley

Funds from the SLCCF are used to increase the quality of life for cancer patients by providing Palliative Care follow-up and case management services. This care assists the patient and family align care goals with provided treatments. The Case Manager provides additional support by linking patients and families with resources that help manage the illness while maintaining quality of life.



Gouverneur Hospital

With support from the SLCCF, Gouverneur hospital has provided a variety of free screenings for the community, including testing for breast, ovarian, prostate, and lung cancer.

Massena Memorial Hospital

Using funds from the SLCCF, MMH hosts free monthly skin cancer screenings. MMH also offers free educational seminars on colorectal cancer awareness, melanoma detection and awareness, and ovarian, uterine, breast and lung cancers.

Canton-Potsdam Hospital

With SLCCF funds, the Center for Cancer Care provides transportation for residents receiving treatment. The Cancer Center vehicle logs 20,000+ miles annually and is often used daily by patients. They have expanded their navigation program to include a financial counselor. This position has saved patients hundreds of thousands of dollars and eased anxiety when dealing with the financial aspect of a cancer battle.

Claxton-Hepburn Medical Center

Aided with SLCCF funds, CHMC physicians

provide 6 free colonoscopies, 10 low-dose lung cancer screenings, and 10 high-risk breast cancer screenings. The Richard Winter Cancer Center purchased a new electronic chemotherapy infusion chair to provide patients with physical and mental comfort during treatment. Cancer care kits have also been provided to patients to ease some of the effects of cancer and make treatments more bearable.



Jules of Life

With support from the SLCCF, Jules of Life created and maintains a website used as a central resource for anyone battling cancer. The website provides valuable information on treatment centers, resources for emotional support, financial assistance, and more.

Help Sami Kick Cancer

The Lodge @ Dreaming Tree Ranch is a beautiful resort in Upstate NY, allowing pediatric cancer patients and their families to reconnect and make lasting memories. The foundation also provides financial support to families living in St. Lawrence County to travel for pediatric cancer treatment. The SLCCF is happy to provide funds to help the foundation and support these families in their travels.

